

PMC Carrier/Adapter

PMC to PCI Express Adapter with TSI384

The Technobox, Inc P/N 6083 4 lane and 8638 1 lane carrier card allows use of a PMC in a PCI express edge card slot. The product features an IDT TSI384 bridge IC used in transparent mode with a PCI express primary side and a PCI/PCI-X secondary side.

The 6083 is fit form and function equivalent to the 4733, but with higher performance under some types of memory accesses due to the use of the TSI384 bridge chip in place of the PLX8114.

The 8636 is fit form and function equivalent to the 4749, but with higher performance under some types of memory accesses due to the use of the TSI384 bridge chip in place of the PLX8114.

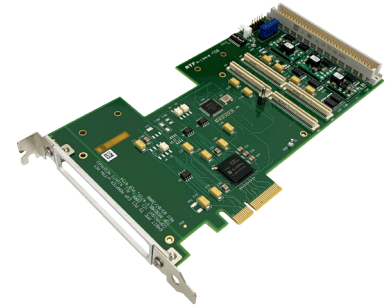
The primary side of the TSI384 bridge is a generation 1 PCI express interface running at

2.5 Giga bits per seconds per lane in each direction. Each lane is composed of a 2.5GHz transmit and a 2.5GHz receive differential pair.

This bridged adapter needs no additional software support since PCI Express is backward compatible with PCI software. Software support for the PMC in use is provided by the PMC supplier.

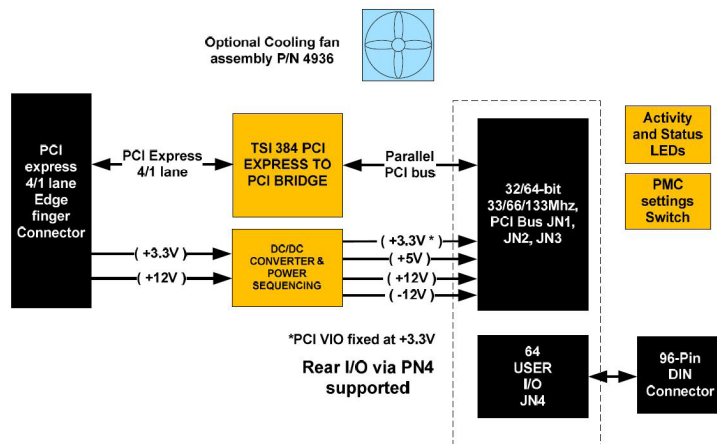
This product should only be used with 3V or 3V/5V PCI signaling PMC cards. Use of 5V PMC cards is prevented by voltage keying.

*The TSI 384 is produced by IDT, but the original design was by Tundra semiconductor.

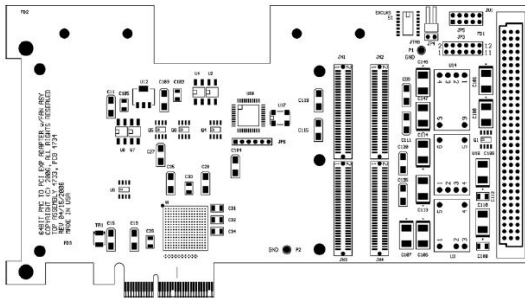


6083

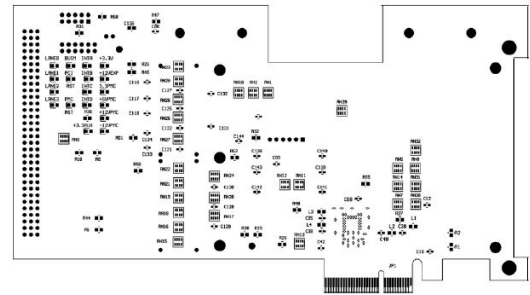
- PCI bus: 33, 66, 100, or 133 MHz, 32 or 64bit, PCI or PCI-X
- PCI signaling +3.3V only
- PMC voltages +5V and -12V generated by high efficiency DC/DC converters.
- IDT TSI384 Bridge chip.
- PCB measures 4.376" x 7.875" maximum envelope. Conforms to PCI exp standard.
- Printed Circuit Board: impedance controlled 8-layer design.
- PN4 support for rear I/O.
- Machined PCI standard front panel accommodates PMC front panel.
- Optional cooling fan available P/N 4946.
- ROHS compliant



Technobox[®], inc.



COMPONENT PLACEMENT VIEW - SIDE #1



COMPONENT PLACEMENT VIEW - SIDE #2

SPECIFICATIONS

Temperature (Operating): -40 to +85 degrees C

Temperature (Storage): -50 to +100 degrees C

Altitude: Not specified or characterized. Typical similar equipment is at 15,000 ft.

Humidity (Operating/Storage): 5% to 95% non-condensing.

Vibration: Not specified or characterized

MTBF: Available upon request

Typical Power Dissipation: Per PMC under test

PCI Environment: 3.3V, PCI-X 32/64 bit,
33/66/100/133 MHz

ORDERING INFORMATION

6083: PMC to PCI Express Adapter with
TSI384 - 4 Lane

8636: PMC to PCI Express Adapter with
TSI384 - 1 Lane

