

XMC Carrier/Adapter

Basic XMC-to-XMC Extender w/ Extraction Tool

Technobox, Inc. P/N 9411 is designed to allow the extension of an XMC module for test access. In addition to providing extension, the unit also elevates the mounted XMC by approximately 11 mm. Both P15 and P16 are supported.

The P15-to-J15 traces are routed for PCI Express signaling. P16 signals, however, are routed in a 1:1 fashion with the differential signals being routed with 100 ohms. Differential pairs are impedance controlled. To further assure signal integrity, the extender's voltage and ground

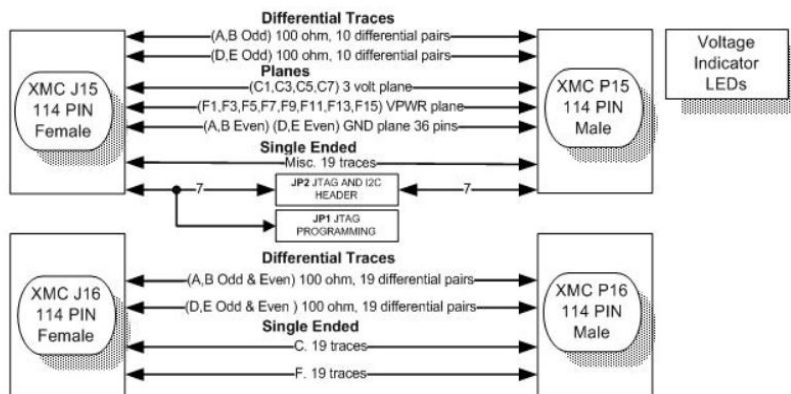
planes have been carefully designed. The installed extraction tool simplifies removal of the mezzanine which can be lifted using even force, eliminating wiggling or tugging that could irreparably damage the mezzanine or the host/carrier site connectors.

It is especially useful when repeated operations are involved, such as in production testing applications. The extender itself is also available without the extraction tool installed (P/N 5270).

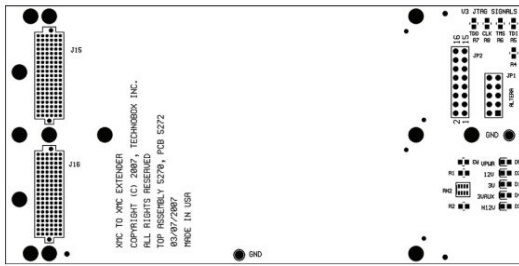


9411

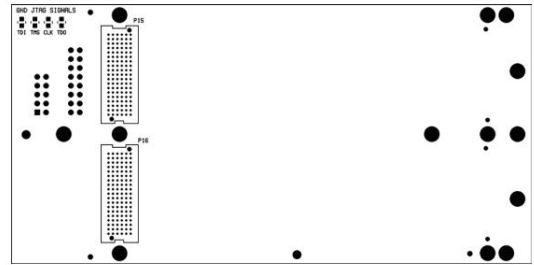
- Extends an XMC for Testing/Debugging
- Extraction Tool Facilitates Mezzanine Removal
- Supports both P15 and P16 XMC Connectors
- Carefully Designed to Preserve Signal Integrity
- Impedance-controlled Differential Pairs
- JTAG Support for Altera Programmer
- User-defined Levels for JTAG
- RoHS Compliant



BLOCK DIAGRAM



COMPONENT PLACEMENT VIEW - SIDE #1



COMPONENT PLACEMENT VIEW - SIDE #2

SPECIFICATIONS

Temperature (Operating): -40 to +85 degrees C

Temperature (Storage): -55 to +100 degrees C

Altitude: Not specified or characterized. Typical similar equipment is at 15,000 ft.

Humidity (Operating/Storage): 5% to 90% non-condensing.

Vibration: Not specified or characterized

MTBF: Available upon request

Typical Power Dissipation: Per XMC under test; minimal demand for LEDs

Voltages Required: +3.3V, VPWR, +12V, -12V, +3.3V AUX

ORDERING INFORMATION

9411: Basic XMC-to-XMC Extender w/ VITA 42 Syle Connectors w/ Extraction Tool Installed

5270: XMC to XMC Extender - 4X

